



CORDOBA

COLORSANE



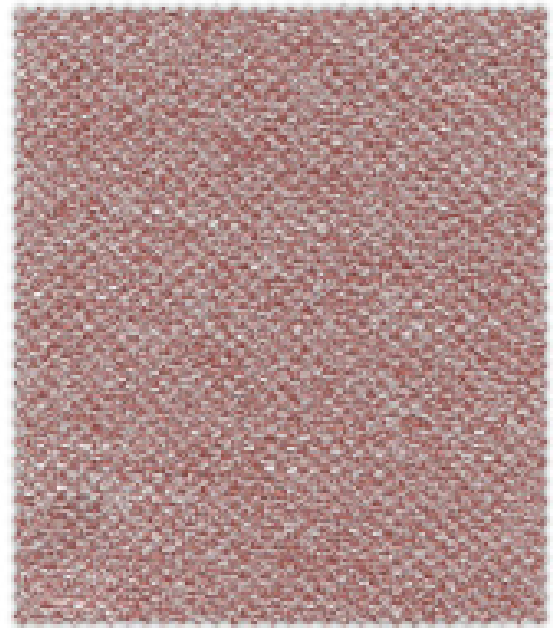
Ash



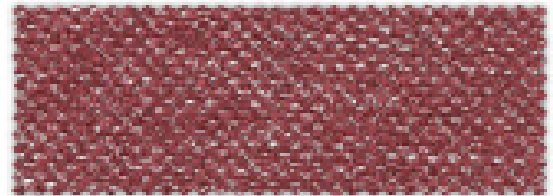
Busca nuestra APP gratuita y descubre nuestras colecciones.
Download our free APP and discover our collections.

App Store Google play



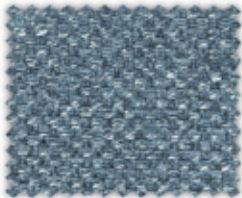


ASH 14

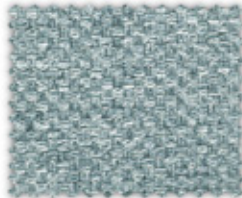


ASH 15

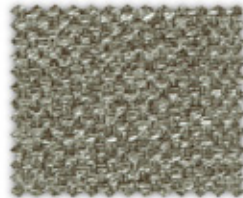
ASN



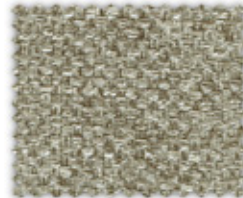
ASH 19



ASH 18



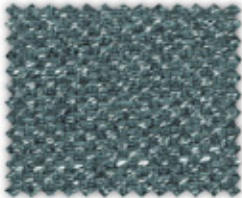
ASH 09



ASH 08



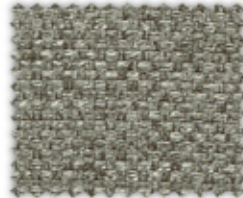
ASH 01



ASH 20



ASH 17



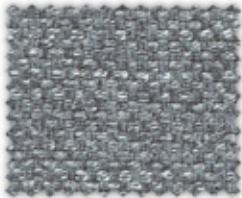
ASH 10



ASH 07



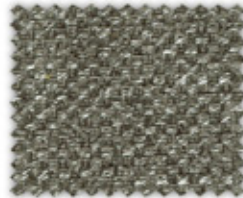
ASH 02



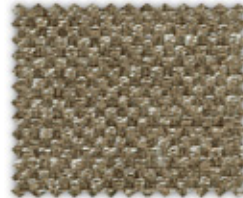
ASH 22



ASH 16



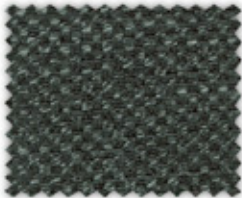
ASH 11



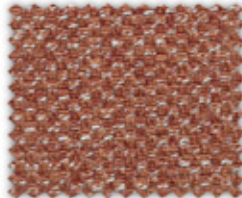
ASH 06



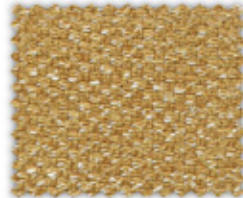
ASH 03



ASH 21



ASH 13



ASH 12



ASH 05



ASH 04



Polígono Industrial La Vega
Parcela 11
T 957 177 952
F 957 176 257
14640 Villa del Río (Córdoba)
pedidos@colorsane.com

www.stilotextil.com



ASH

CARACTERÍSTICAS TÉCNICAS/ TECHNICAL CHARACTERISTICS

LONGITUD DE LA PEZA / ROLL LENGTH	40 m
ANCHO / WIDTH	140 cm
ANCHO ÚTIL / USABLE WIDTH	140 cm
PESO (m ²) / WEIGHT (m ²)	440 g
ESPESOR / THICKNESS	1.9 mm
COMPOSICIÓN - SUPERFICIE / COMPOSITION SURFACE	95% cotton
COMPOSICIÓN - BACINOS / COMPOSITION BACKING	95% polyester
ABRASIÓN (MARTIN DALE) / ABRASION (MARTIN DALE)	over 25000 rubs (until fabric broken)
PILING / PILING	4 grade(7000circles)
SOLIDEZ AL FROTAMIENTO EN SECO / RUBBING FASTNESS DRY	4 (total 5 grades)
SOLIDEZ AL FROTAMIENTO EN HÚMEDO / RUBBING FASTNESS WET	5 (total 5 grades)
RESISTENCIA AL DESGARRO UROMBRE / TEAR STRENGTH WARP	> 64
RESISTENCIA AL DESGARRO TRAMA / TEAR STRENGTH WEFT	> 64
SOLIDEZ A LA LUZ / FASTNESS TO LIGHT	4 (total 5 grades)
DESPLAZAMIENTO COSTURA - UROMBRE / SEAM SLIPPAGE - WARP	> = 6
DESPLAZAMIENTO COSTURA - TRAMA/ SEAM SLIPPAGE - WEFT	> = 6
COLORANTES AZO / AZO DYE STUP	NO

INSTRUCCIONES DE LAVADO RECOMENDADAS / CARE INSTRUCTIONS RECOMMENDATION

